

# 2 Shot Soft Touch Control

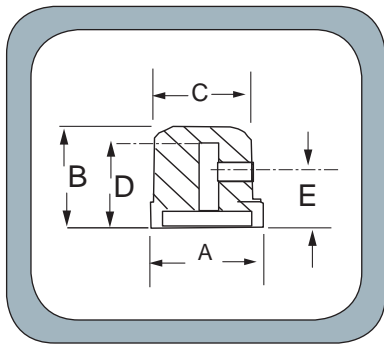
Distinctive knobs for special applications. Available in a wide range of sizes and styles. Female insert, plain molded hole, spring mounting, and interference fit options.



Other 2-shot control knobs available in ABS, polypropylene, nylon, and other thermoplastic material for more demanding applications.



Popular colors include red, gray, blue, green, white, black, and yellow. We can color match for your application.



Material Type	Part No.	A	B	C	D	E	Molded Hole				Female Insert				Interference Fit				"D" Flat Spring Mount			
							1/8"	3/16"	1/4"	6mm	1/8"	3/16"	1/4"	6mm	1/8"	3/16"	1/4"	6mm	1/4" flat to 5/32"	6mm flat to 4.5mm		
TPO	1221	0.45	0.55	0.45	0.44	0.375	■	■	■	■					■	■	■	■	■	■		
TPO	1226	0.60	0.85	0.60	0.60	0.375	■	■	■	■					■	■	■	■	■	■		
TPO	1227	0.60	0.85	0.50	0.60	0.375	■	■	■	■					■	■	■	■	■	■		
TPO	1230	0.72	0.70	0.72	0.60	0.375	■	■	■	■	■	■	■	■	■	■	■	■	■	■		
TPO	1231	0.79	0.70	0.66	0.60	0.375	■	■	■	■	■	■	■	■	■	■	■	■	■	■		

\* For parts with male studs. LENGTH projecting below knob must be specified.  
 ■ Currently Manufacture/Tooled  
 ▲ Could Manufacture/Requires Tooling  
 TPO Thermoplastic Overmold





# 2 and 3 Shot Soft Touch Control

2 Shot and 3 Shot knobs for special applications. Available in a wide range of sizes and styles.



1101



1104, set screw on side



1106



1107



1108



1109



1116



1117

## New! 3 Shot Soft Touch Control Knobs



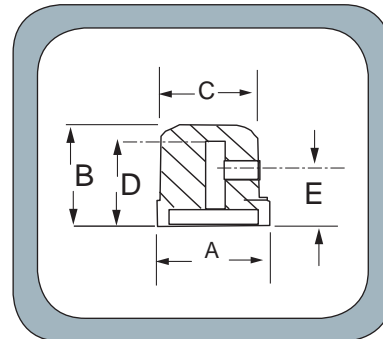
1167



1168



1169



Material Type	Part No.	A	B	C	D	E	"D" Flat Spring Mount	Molded Spline Mount
TPO	1101	0.63	0.58	NA	0.48	NA	6 x 4.5 mm	6mm x18 teeth
TPO	1104	1.14	0.55	NA	0.49	NA		6mm**
TPO	1106	0.73	0.71	NA	0.66	NA	6 x 4.5 mm	6mm x18 teeth
TPO	1107	0.72	0.57	0.34	NA	NA	2.5 x 3.4 mm	
TPO	1108	0.48	0.57	0.34	NA	NA	6 x 4.5 mm	
TPO	1109	0.67	0.69	NA	0.56	NA	6 x 4.5 mm	6mm x18 teeth
TPO	1116	0.74	0.61	NA	0.51	NA		6mm x18 teeth
TPO	1117	0.57	0.58	0.66	0.53	NA	6 x 4.5 mm	6mm x18 teeth
TPO	1167	0.46	0.61	NA	0.51	NA		6mm x18 teeth
TPO	1168	0.58	0.64	NA	0.51	NA		6mm x18 teeth
TPO	1169	0.58	0.63	NA	0.54	NA		6mm x18 teeth

TPO Thermoplastic Overmold  
\*\* Brass Bushing Insert Mount

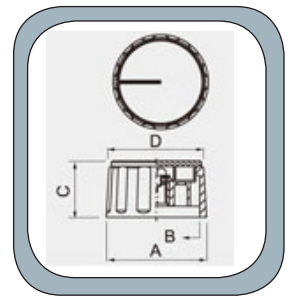


# Collet Mount New!

Unique knobs with secure collet mounting for special applications. Available with or without a bottom nylon pointer. Base colors: Black(B) or Slate Gray(S) and Top/Pointer colors: black(B), red(R), slate gray(S), blue(L), green(G), or yellow(Y).

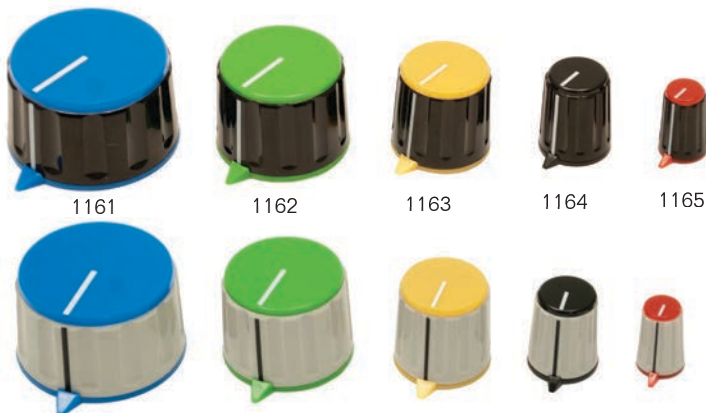


- Thermoplastic Material
- Indicator line is optional
- With nylon color inlay
- Collet Mount, set screw on top
- Brass Bushing insert

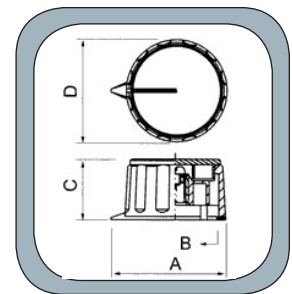


Material Type	A (mm)	B (mm)	C (mm)	D (mm)	Brass Insert Ø	Black Top	Blue Top	Slate Gray Top	Green Top	Red Top	Yellow Top
TP black	36.5	30	20.5	33	1/4"	1121-BB	1121-BL	1121-BS	1121-BG	1121-BR	1121-BY
TP gray	36.5	30	20.5	33	1/4"	1121-SB	1121-SL	1121-SB	1121-SG	1121-SR	1121-SY
TP black	28.5	23	19.5	25	1/4"	1122-BB	1122-BL	1122-BS	1122-BG	1122-BR	1122-BY
TP gray	28.5	23	19.5	25	1/4"	1122-SB	1122-SL	1122-SS	1122-SG	1122-SR	1122-SY
TP black	21.3	16	18.8	18.5	1/4"	1123-BB	1123-BL	1123-BS	1123-BG	1123-BR	1123-BY
TP gray	21.3	16	18.8	18.5	1/4"	1123-SB	1123-SL	1123-SS	1123-SG	1123-SR	1123-SY
TP black	15.3	NA	18	12.8	1/4"	1124-BB	1124-BL	1124-BS	1124-BG	1124-BR	1124-BY
TP gray	15.3	NA	18	12.8	1/4"	1124-SB	1124-SL	1124-SS	1124-SG	1124-SR	1124-SY
TP black	10	NA	15	8.1	1/8"	1125-BB	1125-BL	1125-BS	1125-BG	1125-BR	1125-BY
TP gray	10	NA	15	8.1	1/8"	1125-SB	1125-SL	1125-SS	1125-SG	1125-SR	1125-SY

# Collet Mount with Pointer New!



- Thermoplastic Material
- Indicator line is optional
- With nylon color inlay
- Collet Mount, set screw on top
- Brass Bushing insert
- With bottom nylon pointer



Material Type	A (mm)	B (mm)	C (mm)	D (mm)	Brass Insert Ø	Black Top	Blue Top	Slate Gray Top	Green Top	Red Top	Yellow Top
TP black	41.8	30	21.8	36.7	1/4"	1161-BB	1161-BL	1161-BS	1161-BG	1161-BR	1161-BY
TP gray	41.8	30	21.8	36.7	1/4"	1161-SB	1161-SL	1161-SB	1161-SG	1161-SR	1161-SY
TP black	33	23	21	28.7	1/4"	1162-BB	1162-BL	1162-BS	1162-BG	1162-BR	1162-BY
TP gray	33	23	21	28.7	1/4"	1162-SB	1162-SL	1162-SS	1162-SG	1162-SR	1162-SY
TP black	26	16	19.8	21.7	1/4"	1163-BB	1163-BL	1163-BS	1163-BG	1163-BR	1163-BY
TP gray	26	16	19.8	21.7	1/4"	1163-SB	1163-SL	1163-SS	1163-SG	1163-SR	1163-SY
TP black	18.5	NA	19.2	15.6	1/4"	1164-BB	1164-BL	1164-BS	1164-BG	1164-BR	1164-BY
TP gray	18.5	NA	19.2	15.6	1/4"	1164-SB	1164-SL	1164-SS	1164-SG	1164-SR	1164-SY
TP black	13.5	NA	15.8	10.5	1/8"	1165-BB	1165-BL	1165-BS	1165-BG	1165-BR	1165-BY
TP gray	13.5	NA	15.8	10.5	1/8"	1165-SB	1165-SL	1165-SS	1165-SG	1165-SR	1165-SY

# Instrument

Distinctive knobs for special applications. Glossy or satin finish. Phenolic for durability and attractive appearance. Line or slot for indicating a setting.



1100



1105



1110



1120



1140



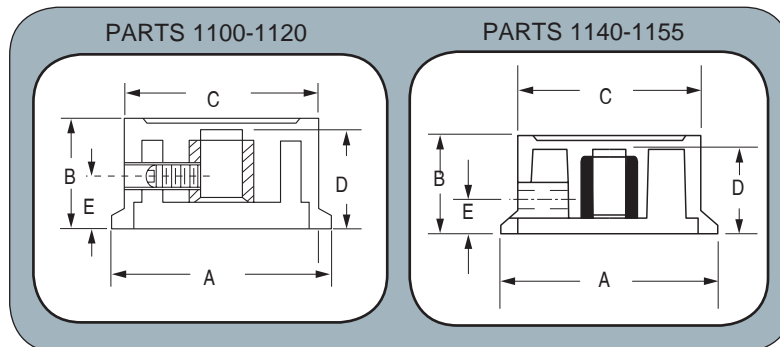
1145



1150



1155



Material Type	Part No.	A	B	C	D	E
TS	1100	25/32	15/32	21/32	13/32	1/2
TS	1105	1	37/64	29/32	1/2	27/32
TS	1110	1 9/32	21/32	1 5/32	33/64	1 1/32
TS	1120	1 3/4	13/16	1 1/2	45/64	1 15/32
TS	1140	19/32	35/64	31/64	27/64	23/64
TS	1145	13/16	5/8	41/64	1/2	1/2
TS	1150	15/16	25/32	3/4	19/32	19/32
TS	1155	1 3/8	45/64	1 9/64	19/32	29/32

Note: All parts include 1/4" brass insert with set screw.  
 \* For parts with male studs. LENGTH projecting below knob must be specified.  
 ■ Currently Manufacture/Tooled  
 ▲ Could Manufacture/Requires Tooling  
 TS Thermoset  
 TP Thermoplastic



# Instrument

Fine ABS control knobs. Sophisticated, low profile appearance, combined with high quality function. Inlay and imprinting available on all parts.



8070



8090



8125/8175



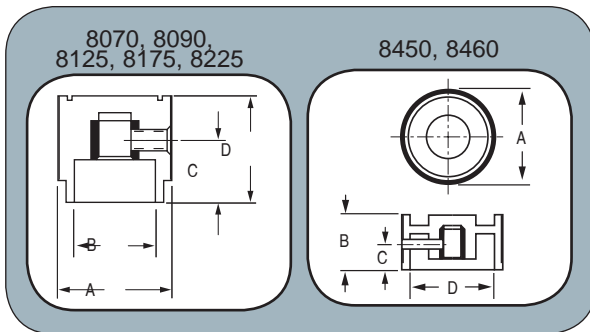
8225



8450



8460



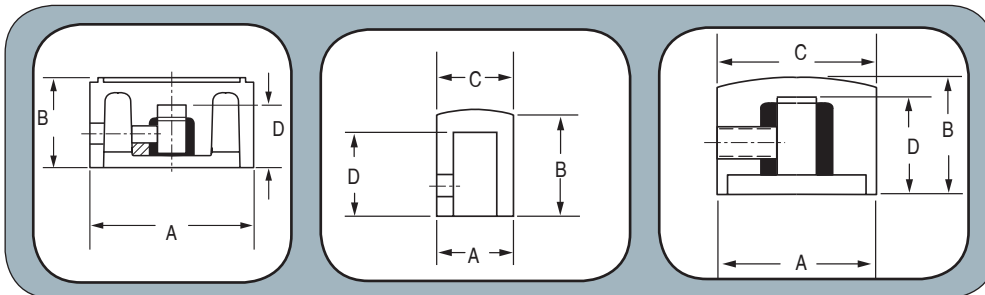
Material Type	Part No.	A	B	C	D	Plain Molded Hole			Female Insert			Spring Mounting
						1/8	3/16	1/4	1/8	3/16	1/4	1/4 Flatted to 5/32
TP	8070	23/32	1/2	13/32	5/8	▲	▲	▲	▲	▲	■	▲
TP	8090	29/32	27/32	11/16	21/32	▲	▲	■	▲	▲	■	■
TP	8125	1 1/4	11/16	17/32	1 3/64	▲	▲	■	▲	▲	■	■
TP	8175	1 3/4	7/8	21/32	1 15/32	▲	▲	▲	▲	▲	■	■
TP	8225	2 1/4	7/8	21/32	1 61/64	▲	▲	▲	▲	▲	■	■
TP	8450	1 1/2	27/32	5/8	1 5/16	▲	▲	▲	▲	▲	■	▲
TP	8460	2 1/8	27/32	11/16	1 55/64	▲	▲	▲	▲	▲	■	▲

Note: All parts can be supplied with or without set screw.  
 \* For parts with male studs, LENGTH projecting below knob must be specified.  
 ■ Currently Manufacture/Tooled  
 ▲ Could Manufacture/Requires Tooling  
 TS Thermoset  
 TP Thermoplastic



# Instrument

Terrific range of sizes and styles to suit your needs. Available in both thermoplastic and phenolic materials. Can be customized to your needs with decorative inlays, indicator lines, or slots. Engraving, hot stamping, and pad printing available.



Material Type	Part No.	A	B	C	D	E	Plain Molded Hole			Female Insert			Spring Mounting
							1/8	3/16	1/4	1/8	3/16	1/4	1/4 Flatted to 5/32
TS	1200	17/32	5/8	-	7/16	-	■	■	■	▲	▲	▲	■
TS	1202	25/32	5/8	21/32	17/32	-	■	■	■	■	■	■	■
TS	1204	1 1/32	11/16	11/16	17/32	-	■	■	■	■	■	■	■
TS	1206	1 13/32	3/4	5/8	17/32	-	▲	▲	■	▲	▲	■	▲
TS	1208	1 25/32	13/16	5/8	17/32	-	▲	▲	■	▲	▲	■	■
TS	1450	11/16	13/32	11/32	-	-	■	■	■	■	▲	■	■
TS	1475	1	1/2	7/16	11/16	-	▲	▲	■	■	■	■	■
TS	1700	3/4	19/32	15/32	-	-	■	■	■	▲	▲	■	■
TS	1900	1/2	5/8	15/32	1/2	-	■	■	■	▲	▲	■	▲
TS	1914	3/4	31/64	3/4	13/32	5/8	■	■	■	■	■	■	▲
TS	1922	1 1/16	23/32	31/32	THRU	11/16	▲	▲	■	▲	▲	■	▲

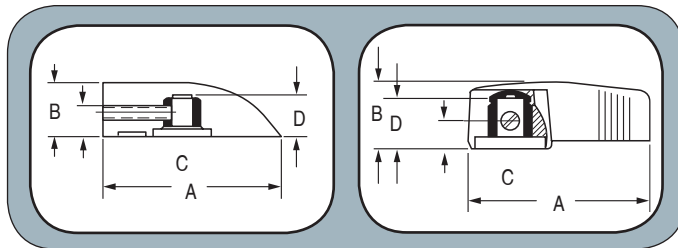
\* For parts with male studs. LENGTH projecting below knob must be specified.

- Currently Manufacture/Tooled
- ▲ Could Manufacture/Requires Tooling
- TS Thermoset
- TP Thermoplastic



# Pointer

There is no larger selection of pointer knobs available anywhere. We carry the widest range of sizes, shapes, and inserts. Can be imprinted. Samples available.



Material Type	Part No.	A	B	C	D	Plain Molded Hole			Female Insert			Spring Mounting 1/4 flatted to 5/32	Molded Spline Mount 6mm x 18 teeth
						1/8	3/16	1/4	1/8	3/16	1/4		
TS	0110	2 3/16	25/32	-	-	▲	▲	▲	▲	▲	■	▲	
TS	0112	1 3/4	5/8	-	1	▲	▲	▲	▲	▲	■	▲	
TS	0115	1 1/4	9/16	-	5/8	▲	▲	▲	▲	▲	■	▲	
TP	1118	0.77	0.64	0.66	0.54								■
TP	1119	1	0.65	0.85	0.55								■
TS	1210	1 1/32	5/8	21/32	17/32	■	■	■	■	■	■	■	
TS	1214	1 21/32	5/8	21/32	17/32	■	■	■	■	■	■	■	
TS	1216	1 9/32	5/8	21/32	17/32	■	■	■	■	■	■	■	
TS	1400	27/32	13/32	11/32	-	■	■	■	■	▲	■	■	
TS	1470	1 1/8	1/2	7/16	11/16	▲	■	■	■	■	■	■	
TS	1500	1 1/8	9/16	1/2	11/16	■	■	■	▲			▲	
TS	1510	3/4	9/16	13/32	9/16	■	■	■	▲			▲	
TS	1520	1 1/2	3/4	5/8	13/16	▲	▲	■	▲	▲	■	■	
TS	1550	1 1/8	5/8	7/16	11/16	▲	▲	■	▲	▲	■	■	
TS	1919	1 1/4	5/8	-	1/2	▲	▲	■	▲	▲	■	▲	

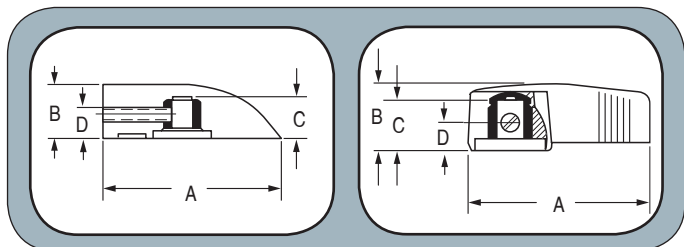
\* For parts with male studs. LENGTH projecting below knob must be specified.

■ Currently Manufacture/Tooled  
▲ Could Manufacture/Requires Tooling  
TS Thermoset  
TP Thermoplastic



# Pointer

Davies offers the widest range of pointer knobs available from crisp lines to soft contours, choose a finish, shape, or design that complements your product. Engraving, hot stamping, pad printing available for all parts.



Material Type	Part No.	A	B	C	D	Plain Molded Hole			Female Insert			Spring Mounting
						1/8	3/16	1/4	1/8	3/16	1/4	1/4 Flatted to 5/32
TS	2100	2 1/2	5/8	7/16	5/8	▲	▲	▲	▲	▲	■	▲
TS	2110	1 5/8	39/64	7/16	5/8	▲	▲	■	▲	▲	■	▲
TS	2150	1 1/4	9/16	1/2	5/8	▲	▲	■	▲	▲		▲
TS	2300	1 7/32	5/8	1/2	21/32	▲	▲	■	▲	▲	■	▲
TS	2310	1 3/16	1/2	7/16	-	■	▲	■	▲	▲		▲
TS	2350	2	5/8	15/32	21/32	▲	▲	■	▲	▲	■	■
TP	1555	1 19/64	1/2	15/64	35/64	▲	▲	▲	▲			■
TP	1560	1 3/4	21/32	35/64	5/8	▲	▲	▲	▲	▲		■
TP	8000	3/4	21/32	15/32	3/8	▲	▲	▲	■	▲		▲
TP	8005	1 3/64	25/32	21/32	9/16	▲	▲	▲	▲	▲	■	▲
TP	8010	1 3/8	1	7/8	11/16	▲	▲	▲	▲	▲	■	▲

\* For parts with male studs. LENGTH projecting below knob must be specified.

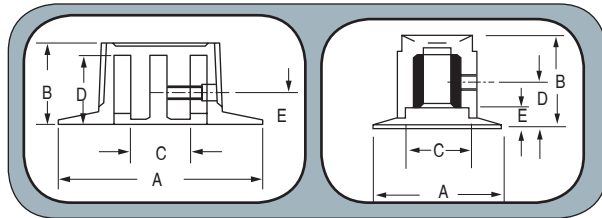
- Currently Manufacture/Tooled
- ▲ Could Manufacture/Requires Tooling
- TS Thermoset
- TP Thermoplastic





# Skirted

Sizes, shapes, decorative inlays, and graphics to enhance your products. Phenolic/nylon to provide appearance, strength, and heat resistance for a variety of applications. Engraving, hot stamping, and pad printing available for all parts.



Material Type	Part No.	A	B	C	D	E	Plain Molded Hole			Female Insert			Spring Mounting
							1/8	3/16	1/4	1/8	3/16	1/4	1/4 Flatted to 5/32
TPO	1504	1	39/64	1/2	-	-	▲	▲	■	▲	▲	■	■
TPO	1505	1 3/8	27/32	1/2	-	-	▲	▲	■	▲	▲	■	■
TPO	1506	1 5/8	61/64	1/2	-	-	▲	▲	■	▲	▲	■	■
TS	1212	1 1/8	11/16	21/32	17/32	1/2	▲	▲	■	▲	▲	■	■
TS	1322	1 7/16	9/16	11/16	-	-	▲	▲	■	▲	▲	▲	▲
TS	1326	1 59/64	1/2	7/8	-	-	▲	▲	■	▲	▲	▲	▲
TS	1330	2 1/2	43/64	1 21/64	-	-	▲	▲	■	▲	▲	▲	▲
TS	1600	1 1/2	11/16	5/8	-	-	▲	▲	■	▲	▲	■	■
TS	1610	29/32	19/32	19/32	-	-	■	▲	■	▲	▲	■	■
TS	1650	2 1/4	7/8	1	-	-	▲	▲	■	▲	▲	▲	▲
TS	1910	3/4	1/2	17/32	13/32	9/16	■	■	■	■	■	■	■
TS	1913	1 1/8	5/8	13/16	1/2	11/16	▲	▲	■	▲	■	■	■
TS	1920	1 1/4	3/4	31/32	19/32	11/16	▲	▲	■	▲	■	■	■
TS	1925	1 1/4	23/32	31/32	THRU	11/16	▲	▲	■	▲	■	■	■
TS	1930	1 1/2	7/8	1 1/64	3/4	13/16	▲	▲	■	▲	▲	■	▲
TS	1940	2 1/32	15/16	1 3/8	13/16	13/16	▲	▲	■	▲	▲	■	■
TP	1620	1 1/4	5/8	15/32	-	-							■
TP	1630	1 9/16	49/64	15/32	-	-							■
TP	1640	1 3/4	7/8	15/32	-	-							■
TP	1660	1 5/8	27/32, 57/64, 61/64, 1 11/32, 2 5/32	1/2	-	-	▲	▲	▲	▲	▲	▲	▲
TP	1665	1 15/16	1 29/64, 1 3/4	5/8	-	-	▲	▲	▲	▲	▲	▲	▲
TP	1680	2	1 13/16	1/2	-	-	▲	▲	▲	▲	▲	▲	▲
TP	8072	1 1/8	13/16	11/16	9/16	-	▲	▲	▲	▲	▲	■	■

\* For parts with male studs, LENGTH projecting below knob must be specified.  
 ■ Currently Manufacture/Tooled  
 ▲ Could Manufacture/Requires Tooling  
 TS Thermoset  
 TP Thermoplastic  
 TPO Thermoplastic overmold

# Large Fluted with Skirts

Versatile knobs with mechanically attached skirts that will remain firmly in place. Skirts can be lined in white, as a location finder, or numbered to your specifications. Engraving, hot stamping, and pad printing available for all parts.



4104



4105



4106



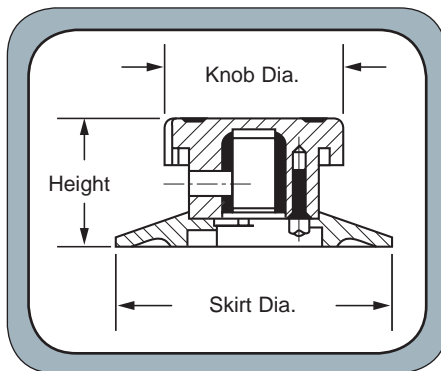
4107



4108



4109



Material Type	Part No.	Knob	Skirt	Knob Diameter	Skirt Diameter	Combined Height	Female Insert				Plain Molded Hole			
							3/16	1/4	5/16	3/8	3/16	1/4	5/16	3/8
TS	4104	4100	4110	1 1/8	1 1/2	13/16	▲	■	▲	▲	▲	■	▲	▲
TS	4105	4100	4111	1 1/8	1 3/4	13/16	▲	■	▲	▲	▲	■	▲	▲
TS	4106	4101	4110	1 3/8	1 1/2	7/8	▲	■	▲	▲	▲	▲	▲	▲
TS	4107	4101	4111	1 3/8	1 3/4	7/8	▲	■	▲	▲	▲	▲	▲	▲
TS	4108	4102	4112	1 5/8	2 1/16	29/32	▲	■	▲	■	▲	■	▲	▲
TS	4109	4103	4113	2 3/8	3	1 1/32	▲	■	▲	■	▲	■	▲	▲

■ Currently Manufacture/Tooled  
 ▲ Could Manufacture/Requires Tooling  
 TS Thermoset  
 TP Thermoplastic

