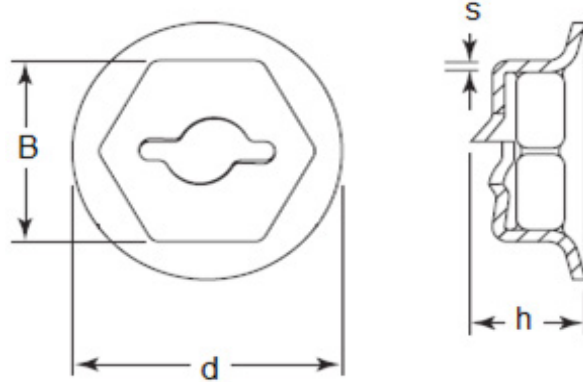
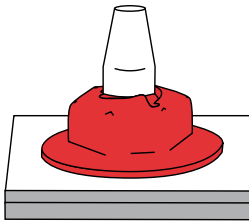


**Palnut® Stamped Nuts**  
Self-Threading / Washer

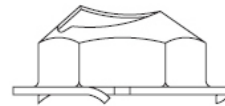


**APPLICATION INFORMATION**

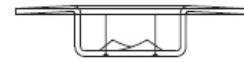


- Used in place of traditional hex nuts for reduced weight or applications requiring lower torques, but form their own thread on a smooth die cast, mild steel or plastic stud
- The interference caused by the nut and stud creates a strong locking force that prevents disassembly
- Integral washer accommodates a larger mating hole to compensate for component build variation
- One-piece design eliminates the need for multiple small parts, reducing inventory space
- A seal can be added to prevent noise and water intrusion

**DESIGN VARIATIONS**



(G) WASHER WITH SERRATION



(K) INTERNAL HEX DRIVE

- G - Torque limiting feature to protect panels during installation
- K - Internal drive feature that reduces the installation tool size and space needed to effectively fasten the part



advancecomponents.com 972-446-5500



On Studs

## Palnut® Stamped Nuts

### Self-Threading / Washer

#### Imperial

Part Number	Legacy Part Number	Stud Size	Drive (B)	Diameter (d)	Height (h)	Material Thickness (s)	Design Variation
138787	SD 125007	1/8"	5/16"	0.437	0.186	0.017	-
138790	SD 156007	5/32-4mm	11/32"	0.450	0.202	0.018	-
138792	SD 188008	3/16"	3/8"	0.500	0.217	0.017	-
138861	SZ 001966	3/16"	3/8"	0.750	0.153	0.018	K
138795	SD 250095	1/4"	7/16"	0.594	0.247	0.021	-
138804	SF 312014	5/16"-8mm	1/2"	0.875	0.309	0.023	-
138828	SP 330012	11/32"	9/16"	0.750	0.290	0.022	G

#### Metric

Part Number	Legacy Part Number	Stud Size	Drive (B)	Diameter (d)	Height (h)	Material Thickness (s)	Design Variation
138862	SZ 002003	5mm	10mm	14.82	5.03	0.51	G
138786	SD 050015	5mm	10mm	15.00	5.40	0.43	-
138815	SK 050021	5mm	10mm	21.00	6.84	0.48	-
138800	SF 060015	6mm	11mm	15.00	6.35	0.53	-
138801	SF 060018	6mm	11mm	18.00	7.18	0.53	-
138806	SF 630018	1/4"	3/8"	18.00	7.06	0.53	-
138802	SF 080020	5/16"-8mm	13mm	20.00	7.85	0.58	-
138829	SP 330016	11/32"	1/2"	25.40	7.98	0.58	G

*Most parts manufactured in spring steel*

Speed Nuts® & Palnuts®



advancecomponents.com 972-446-5500