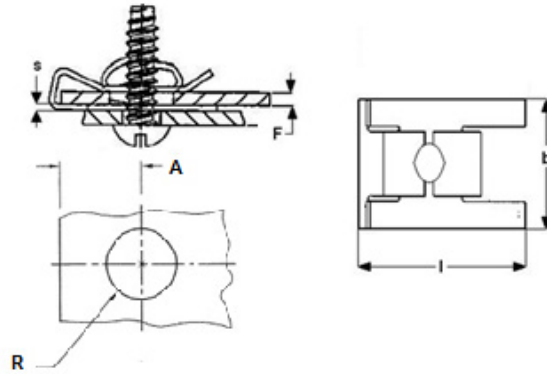
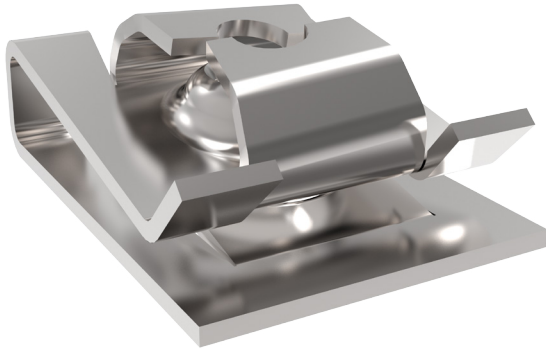
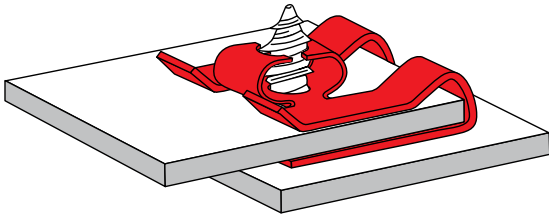


U-Nuts

5-Prong (Prevailing Torque)



APPLICATION INFORMATION



- Used to provide simple, rapid attachment of mating panels
- Parts self-retain in screw-receiving position
- A viable alternative for coarse screw threads
- The 5-prong feature adds prevailing torque and increases destruction torque
- The nut is slid onto the panel edge and over the panel hole
- Self-retention feature improves assembly time and eliminates costly welding and clinching costs
- Corrects misalignment in panel mounting holes
- Part does not turn as the screw is driven and will not freeze on screw threads
- Serviceable - parts disassemble easily and reliably
- Can be used wherever a screw or bolt is used and in place of clinch nuts and weld nuts
- Easy to assemble, requiring no special tools
- The strength of the part corresponds to the strength of the screw



advancecomponents.com 972-446-5500



On Panel
Edges

U-Nuts

5- Prong (Prevailing Torque)

Metric

Part Number	Legacy Part Number	Thread Specification	Panel Thickness (F)	Throat Distance (A)	Hole Diameter (R)	Width (b)	Length (l)
137607	D98316-071M	ST4.2 (8-18)	0.50 - 1.80	7.92	8.33 - 8.33	13.78	19.50
137608	D98317-071M	ST4.2 (8-18)	1.80 - 3.80	7.90	8.30 - 8.30	13.78	19.50
137736	D98860-071M	ST4.2 (8-18)	2.40 - 2.90	8.00	6.75 - 6.75	14.00	18.50
137643	D98585-071M	ST4.2 (8-18)	2.40 - 2.90	8.00	6.75 - 6.75	14.00	18.50
137360	C71667-M42141	ST4.2 (8-18)	1.80 - 4.00	8.70	8.00 - 8.00	13.60	18.40
137900	D99174-071M	ST4.2 (8-18)	0.80 - 1.20	14.00	8.33 - 8.33	13.77	25.20
137621	D98434-071M	ST4.2 (8-18)	1.80 - 3.80	14.00	8.33 - 8.33	13.77	25.20

Most parts manufactured in spring steel



advancecomponents.com 972-446-5500