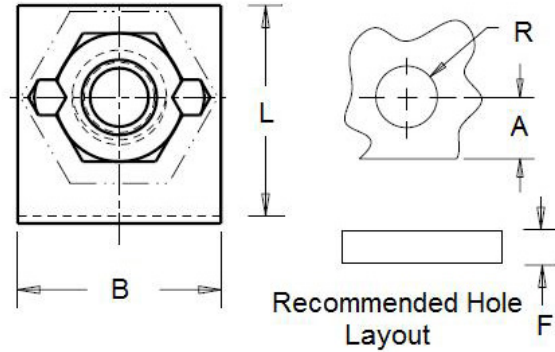
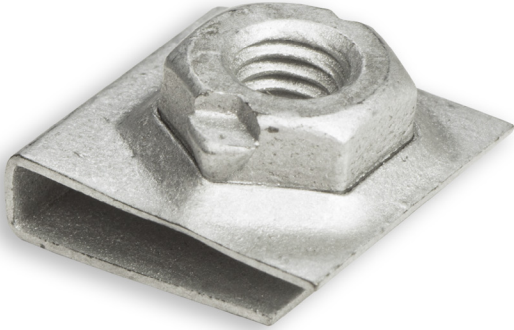
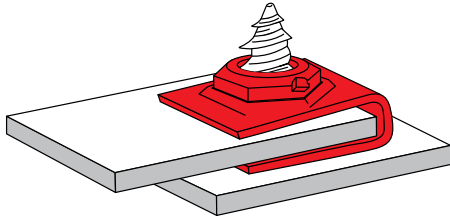


U-Nuts

Nut Retainer

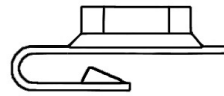


APPLICATION INFORMATION

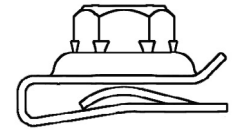


- Used to provide simple, rapid attachment of mating panels
- Parts self-retain in screw-receiving position
- Preferred alternative for larger screw sizes
- The nut is slid onto the panel edge and over the panel hole
- Self-retention feature improves assembly time and eliminates costly welding and clinching costs
- Corrects misalignment in panel mounting holes
- Part does not turn as the screw is driven and will not freeze on screw threads
- Serviceable - parts disassemble easily and reliably
- Can be used wherever a screw or bolt is used and in place of clinch nuts and weld nuts
- Easy to assemble, requiring no special tools
- Combine the strength of the nut with the flexibility of the spring steel cage

DESIGN VARIATIONS



J-TYPE



U-TYPE



advancecomponents.com 972-446-5500



On Panel
Edges

U-Nuts Nut Retainer

Imperial

Part Number	Legacy Part Number	Thread Specification	Panel Thickness (F)	Throat Distance (A)	Hole Diameter (R)	Width (b)	Length (l)	Type
136828	C30110-1024	10-24	0.093 - 0.135	0.375	0.437 - 0.437	0.560	0.730	J-Type
136850	C33945-1032	10-32	0.050 - 0.075	0.375	0.343 - 0.343	0.687	0.710	U-Type
136851	C33945-1420	1/4-20	0.050 - 0.075	0.375	0.343 - 0.343	0.687	0.710	U-Type
136829	C30110-1420	1/4-20	0.093 - 0.135	0.375	0.437 - 0.437	0.560	0.730	J-Type
137560	D31758-1032	10-32	0.060 - 0.070	0.272	0.281 - 0.281	0.500	0.570	U-Type

Metric

Part Number	Legacy Part Number	Thread Specification	Panel Thickness (F)	Throat Distance (A)	Hole Diameter (R)	Width (b)	Length (l)	Type
136856	C33962SS-1024	10-24	2.92 - 3.18	9.52	0.30 - 7.62	17.45	18.04	U-Type
136841	C33892-1024	10-24	0.81 - 2.36	12.70	0.44 - 10.00	15.87	24.01	J-Type
136842	C33892-1032	10-32	0.81 - 2.36	12.70	0.44 - 10.00	15.87	24.01	J-Type
136844	C33896-1420	1/4-20	2.29 - 3.56	12.70	0.53 - 12.80	19.05	26.29	J-Type
136843	C33892-1420	1/4-20	0.81 - 2.36	12.70	0.44 - 10.00	15.87	24.01	J-Type
136848	C33924-1420	1/4-20	0.81 - 2.36	19.84	0.39 - 10.00	15.87	30.88	J-Type
136854	C33952-5618	5/16-18	1.27 - 2.29	13.87	0.50 - 12.80	19.05	26.67	J-Type
136840	C33883-5618	5/16-18	3.18 - 3.43	11.43	0.50 - 12.70	14.73	23.85	J-Type
136846	C33896-5618	5/16-18	2.29 - 3.56	12.70	0.50 - 12.80	19.05	26.29	J-Type
136855	C33953-5618	5/16-18	3.23 - 4.14	12.70	0.44 - 11.10	19.05	25.40	J-Type
136853	C33952-3816	3/8-16	0.05 - 0.09	0.55	0.50 - 0.50	0.75	26.67	J-Type
136845	C33896-3816	3/8-16	2.29 - 3.56	12.70	0.50 - 12.80	19.05	26.29	J-Type
136847	C33896-M61	M6x1.0	2.29 - 3.56	12.70	12.80 - 12.80	19.05	26.29	J-Type

Most parts manufactured in spring steel

Self-Retaining Threaded Nuts