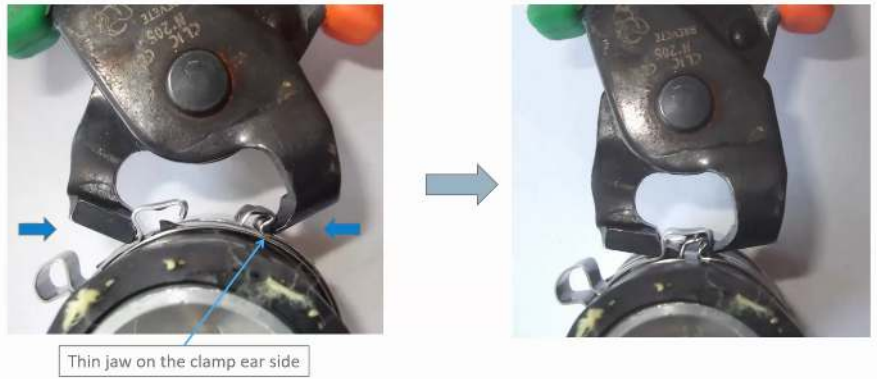


CLIC[®] 205 PLIERS

CLIC 205 Pliers are used to install CLIC Clamps. Caillau CLIC Clamps provide a solid grip on hoses and are engineered to withstand temperatures ranging from -40°C to +140°C. CLIC 205 Pliers are easy to use when assembling or disassembling clamps. Simply position the plier tool on the clamp, click and tighten.



To assemble:



To disassemble:

