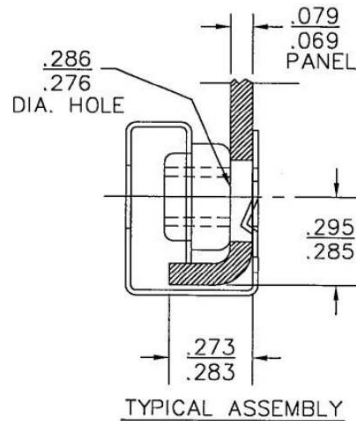




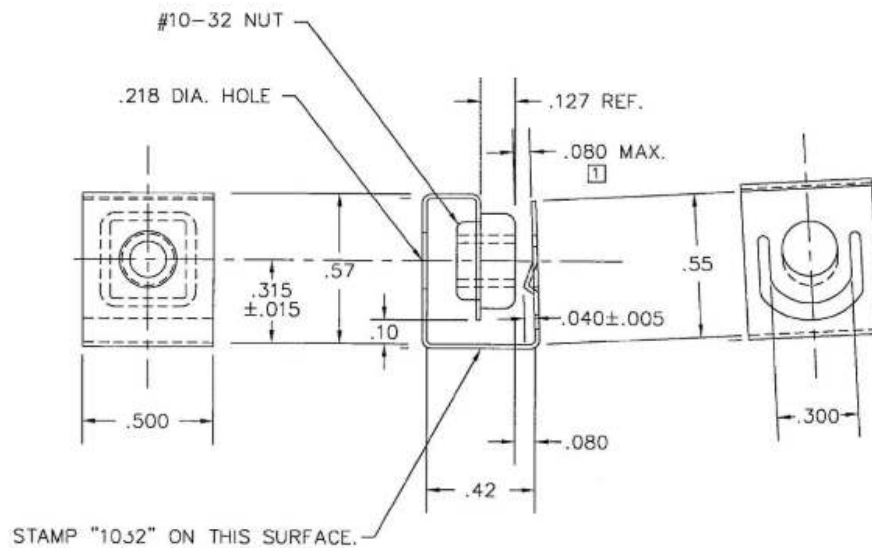
ADVANCE BASICS

G-NUTS



G-NUTS combine the high strength of a multi-threaded nut and spring steel while eliminating the need for multiple tapped holes.

- Installs onto pre-punched hole by clipping onto the flange, or sliding laterally until it aligns.
- Mounting legs snap to the hole creating positive retention until screw is applied.
- Typical applications: cabinet and electronic chassis assembly.



ADVANCE
COMPONENTS

advancecomponents.com
974-446-5500